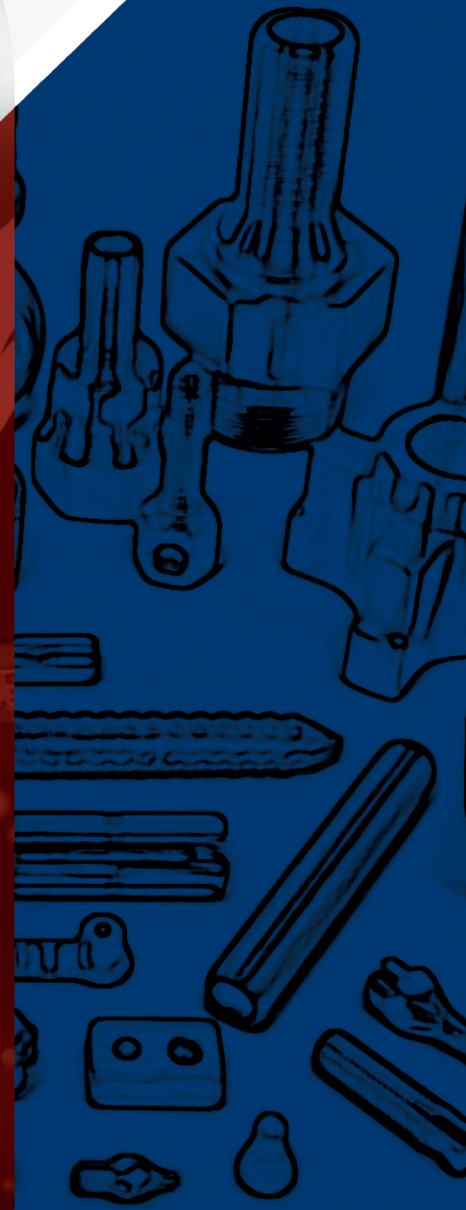




**Maruti**  
ENTERPRISE  
Delivering Excellence...



**Manufacturer &  
Exporter of  
Precision Parts**



# We At Maruti, Strive For Superlatives, And We Thrive Too

## The Leadership Synergy

Team Maruti has diverse techno-commercial experience. We have a team of engineers for the development as well as quality assurance roles. We believe our employees as our greatest asset. We are privileged to be able to call 80 employees as our extended family.

## The Machine Capabilities

We at Maruti believe in continuous capital investments in latest machinery to serve our esteemed clients with no compromise on quality. We have believed in developing in-house solutions for value added processes like machining and radiography (NDT) to ensure timely delivery of our Machined Parts.

## What Sets Us Apart ?

### One stop solution for all your metal components requirements

Associate facilities to manufacture complex castings, machining, Coating & Assembly.

### Quick Sample Development Process

We Have Dedicated Employees To Support Customers Willing To Switch Over To **Maruti** Or have Any New Project Reuirements.

### Technically Sound & Professional

#### Management Team

We Have A Team With Global Experience For Quick & Effective Communication With Our Prestigious Customers.

### Commitment To Consistent Quality And Timely Delivery

We Supply Precision Parts To Critical Application Where late Delivery & Quality Issues Are Worth Millions Of Dollars. We Count Our Customers Reputation As Our Own Reputation.





# MACHINING Facilities

**Make:** ACE  
**Controller:** FANUC  
**NOS.** - 14

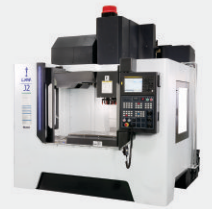
**Size:** Swing Over Dia: 640mm Max  
Turning Dia: 580mm Max  
Turning Length : 500mm Max



## Cnc Lathes

**Make:** LMW  
**Controller:** FANUC  
**NOS.** - 2

**Size:** X AXIS 1050 mm  
Y AXIS 540 mm  
Z AXIS 600 mm



## Vertical Maching Centers

**Make:** MAZAK QTS 200M  
**Controller:** MAZATROL  
**NOS.** - 1

**Size:** Swing Over Dia: 600mm Max  
Turning Dia: 450mm Max  
Turning Length : 700mm Max  
C AXIS Min Increment: 0.001°



## Mazak Turn Mill

**Make:** ACE  
**Controller:** FANUC  
**NOS.** - 1

**Size:** Swing Over Dia: 450mm Max  
Turning Dia: 300mm Max  
Turning Length: 550mm Max



## Vertical Turning Lathes

**Make:** FANUC  
**Controller:** FANUC  
**NOS.** - 2

**Size:** X AXIS 600 mm  
Y AXIS 400 mm  
Z AXIS 450 mm  
Forth axis rotatory table Dia: 300 mm



## Robodrill

**Make:** JP Balancing  
**Controller:** FANUC  
**NOS.** - 1

**Size:** Swing Over Dia: 500mm Max  
Maximum Workpiece 35 kg  
Max. Diameter Of Workpiece 200-400 mm  
Max. Milling Agle Each Time 75 Sec



## Balancing Machine

	ASTM(A48)	DIN(1691)
<b>CI Casting</b>	GI (20/25)	GG15
	GI (30)	GG20
<b>SGI Casting</b>	ASTM(A395)	DIN(1693)
	SGI (60-40-18)	GG 40

	AISI	DIN
<b>Carbon Steel</b>	8620	1.6523
	1018	1.0401
	1010	1.1121
	1020	1.0406/2
	1040	1.1186
	1045	1.1191
	4140	1.722
	EN1A, EN8D, EN9, EN31, 430, 416	

	AISI	DIN
<b>Stainless Steel</b>	SS202	1.4319
	SS201	30201
	SS303	1.4305
	SS304	1.4301
	SS304L	1.4306
	SS316L	1.4404
	SS316TL	1.4573
	SS316	1.4401
	SS321	1.4541

	AISI	DIN
<b>Metal Alumiumm</b>	GR 6061	AL- mg1sic4 (HE-20)
	GR 6082	AL- silmg4 (HE-30)
	AA 2011 AL- cu6bipb	

	AISI	DIN
<b>Brass Parts</b>	(cu2n39pb3)	
	(cu2n40)	
	(c3600)	
	(cu2n38pbl)	
	(cu2n40pb3)	

- ⊙ LDPE Low-Density Polyethylene
- ⊙ PVC Solid Food Grade
- ⊙ PTFE Teflon



# QUALITY EQUIPMENTS

- Vision Systems
- CMM
- Digital Micrometers
- Circular Form Gauge
- Concentricity Gauge
- Micrometers
- Hardness Testers
- Profile Gauge
- Optical Comparators
- Air Gauge
- Crack Detectorness

## MEASURING Facilities



### 2D Height Gauge

**Make :** Mahar

#### Specifications

**Measuring Range:** 600 mm

**Expandable Range:** 915 mm

**Squareness:** 10 Micron

### Height Gauge

**Make :** Mahar

#### Specifications

**Measuring Range:** 600 mm

Digital Height Gauge With Double Column



### CMM

**Make :** Mitutoyo

**Model:** CRYSTA-Apex S7106

**Size:** 700(X) X 1000(Y) X 600(Z) mm

**Resolution:** 0.1 QM

Features:

1. Scanning Probe
2. Compatible With Non-Contact Measuring
3. Reverse Engineering

**Software:**

MCOSMOS Level 3



### Roughness Measuring

**Make :** Mahar

1. Digital Touch Display
2. Provide Accurately Ra value
3. Adjustable With Height Gauge
4. Data Can Be Saved Or Printed After Use





## Casting

**C.I. / S.G.I. / Investment**

- ⊙ Semi Pressure Line
- ⊙ 300kg & 500kg Induction (Plazma)
- ⊙ Maximum Mould Size Capacity 550x600 MM
- ⊙ In-House Testing Facilities (Sand Testing/ Spector/Handness Tester/Tensile/Micro)
- ⊙ Maximum Workpiece Weight 35 kg



## Forging

- ⊙ 200 Ton Screw Press - ( Up Stroke )  
(Workpiece Maximum Capacity 1 kg )
- ⊙ 500 Ton Friction Press - ( Down Stroke )  
(Workpiece Maximum Capacity 5 kg )
- ⊙ 2.5 Ton Hammer Press - ( Pneumatic Stroke )  
(Workpiece Maximum Capacity 25 kg )



## Alu. Pressure Die

- ⊙ Maximum Die Mould 660x660 MM
- ⊙ Auto Feeder Capacity 7 kg
- ⊙ Maximum Workpiece Weight 9 kg

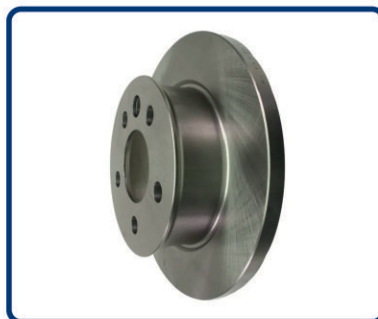
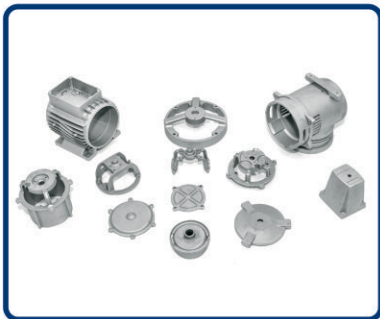
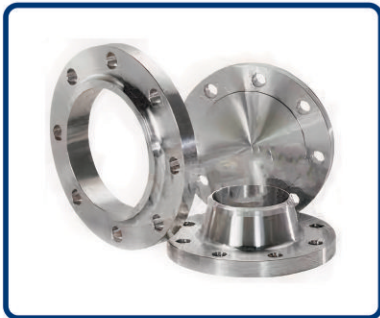
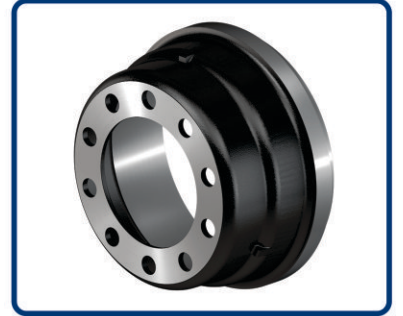
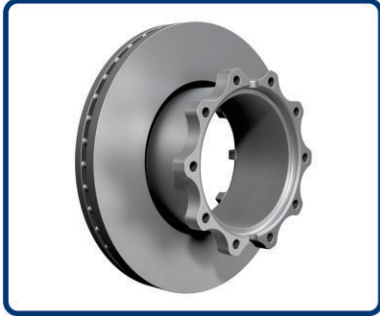


## Machining

- ⊙ In-House Production Facilities:  
No Of Machines: 18 Nos
- ⊙ Make: Mazak, LMW, Tredent, ACE, Fanuc
- ⊙ CNC, VMV, Tnrnmil, VTL, Roborill , HMC



# PRODUCT







Address : Urja Ind. Park, Shinning Gate, Shapar, Rajkot-360024.

Contact No : +91 97389 00009 | +9182641 33658

Email : [info@maruthient.com](mailto:info@maruthient.com)

Website : [www.maruthient.com](http://www.maruthient.com)